

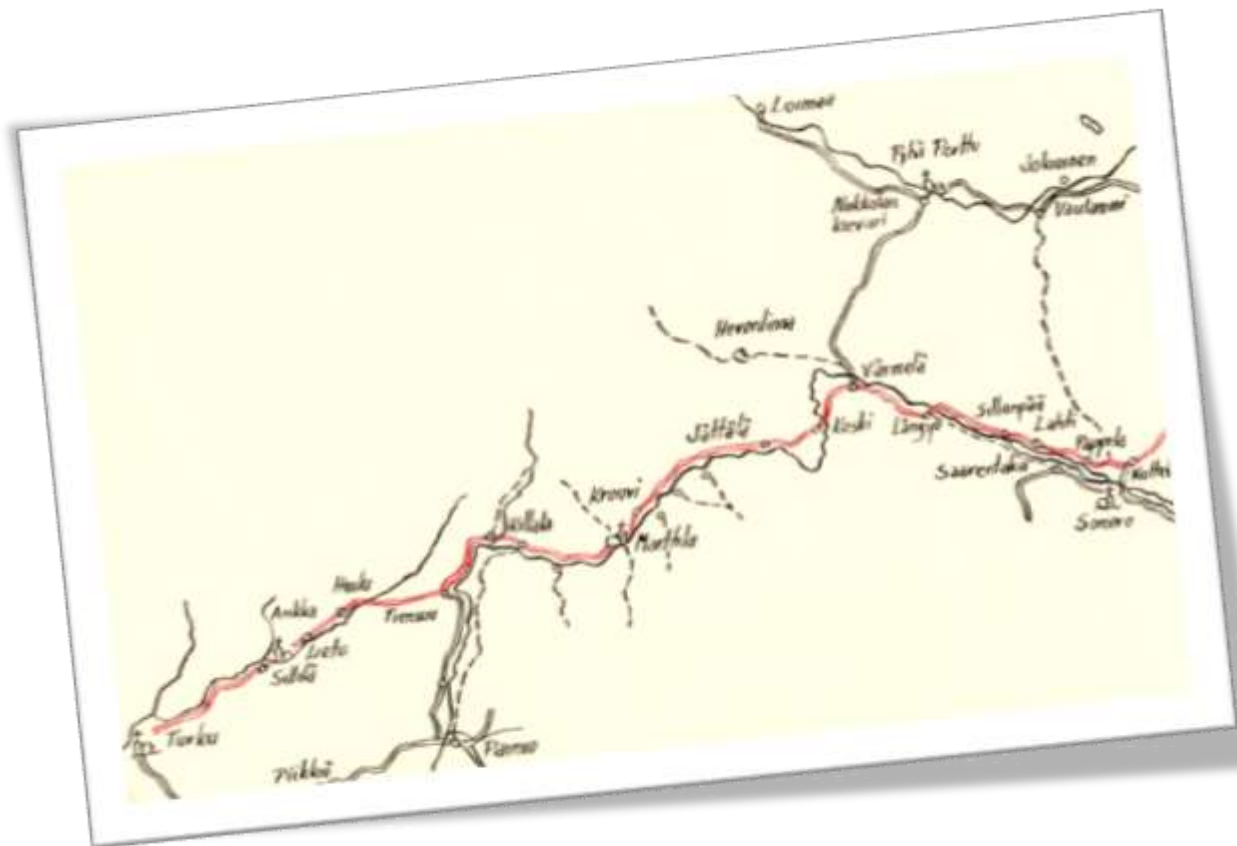


KIRKKO PYHIMYKSEN KOTINA?

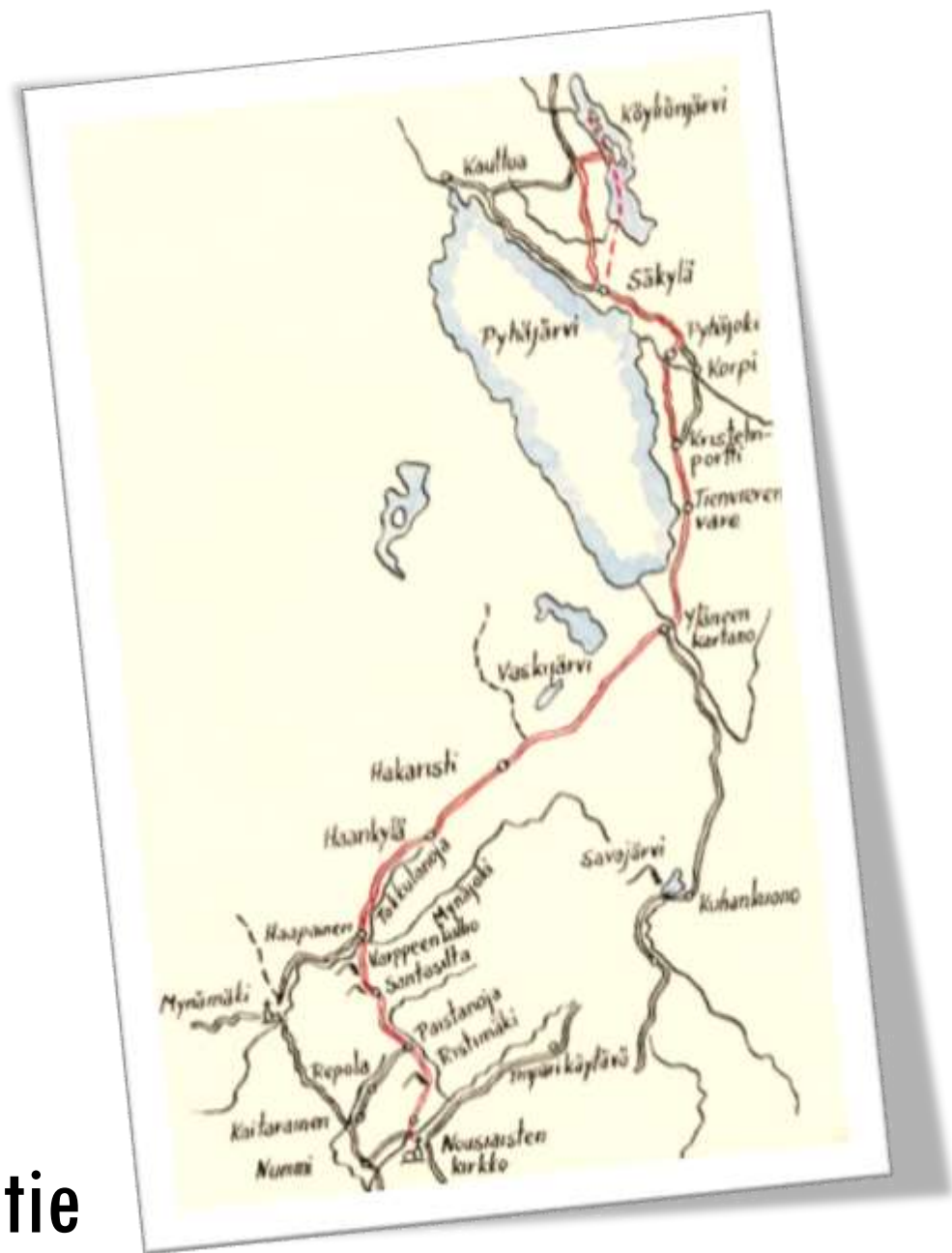
Kirkkotila ja
keskiaikaiset
pyhiinvaeltajat



Hämeen härkätie



Sant Henrikin tie

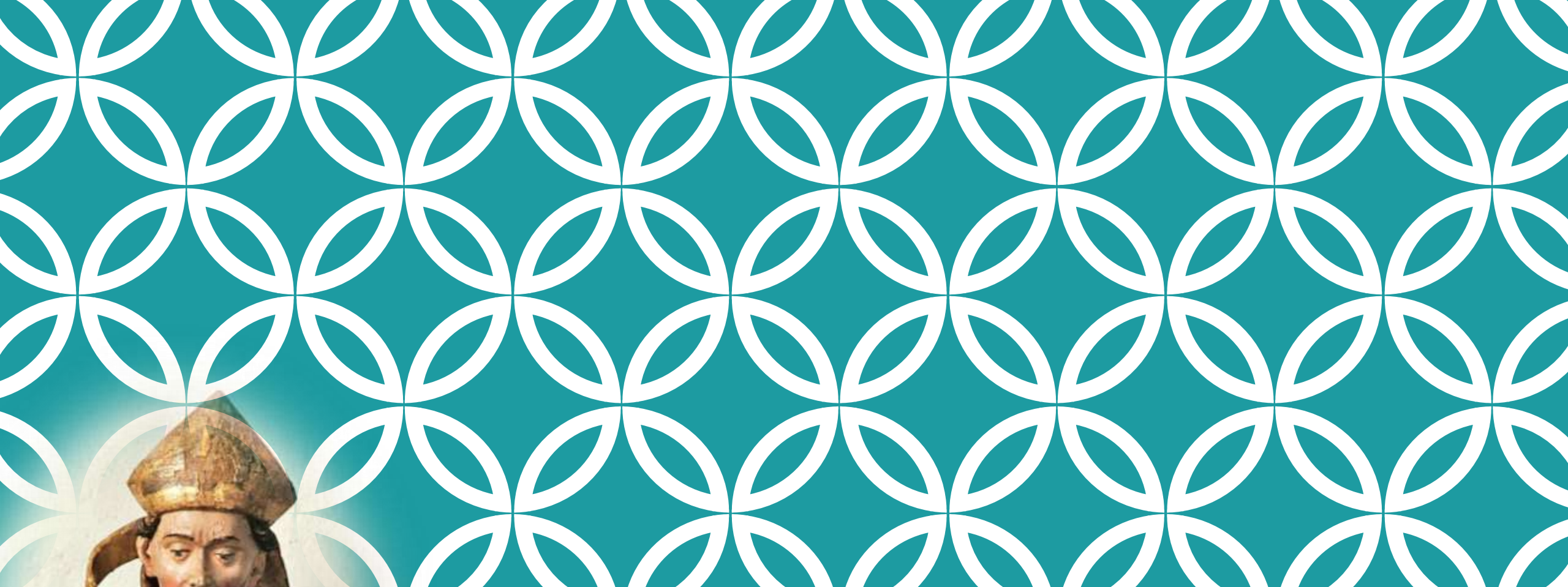




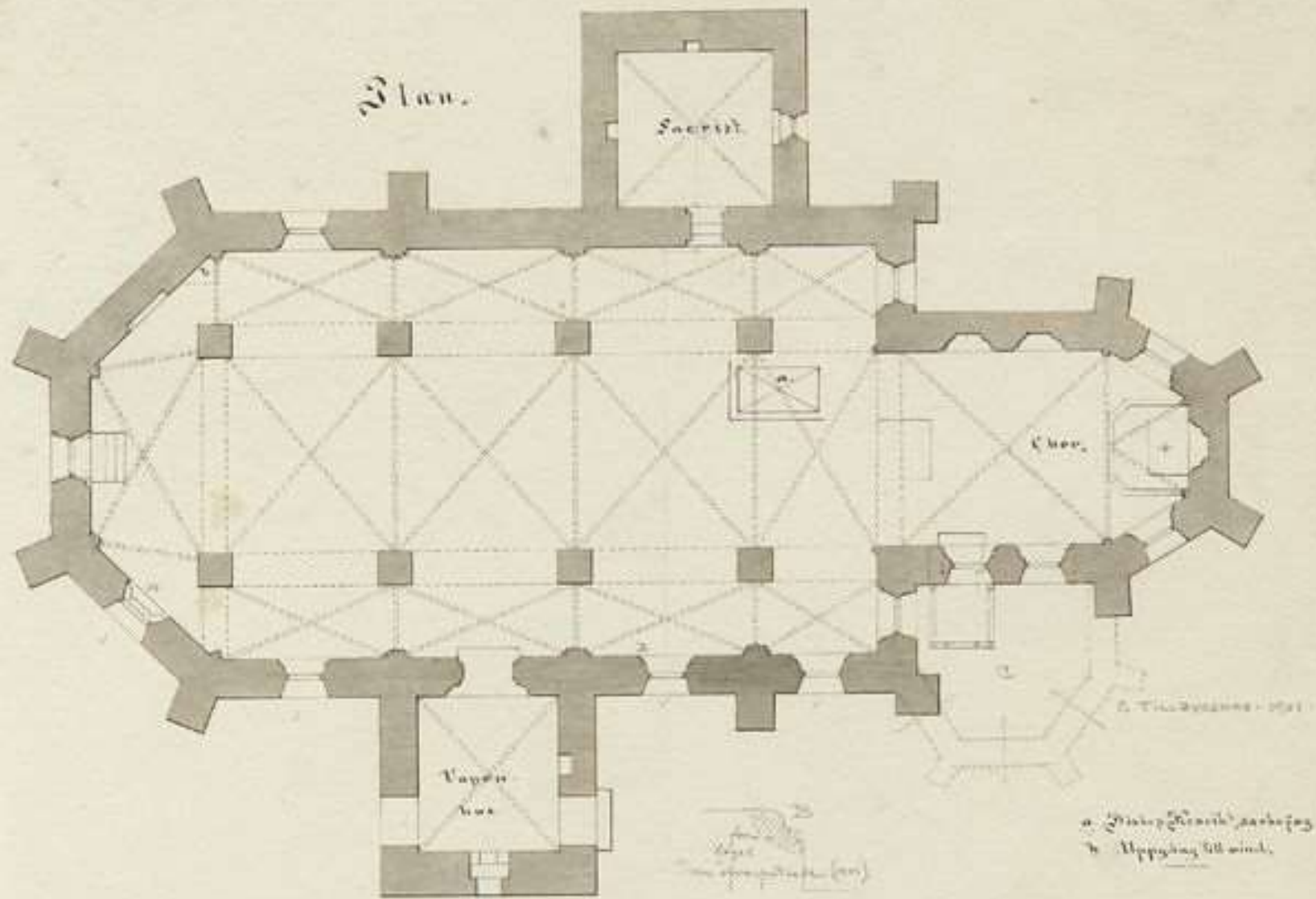
*Nousiasten kirkko.
(Ruhouspuolella)*

*1877
Nousiasten*

*1877
Nousis kirkko*



TERVETULOA! |

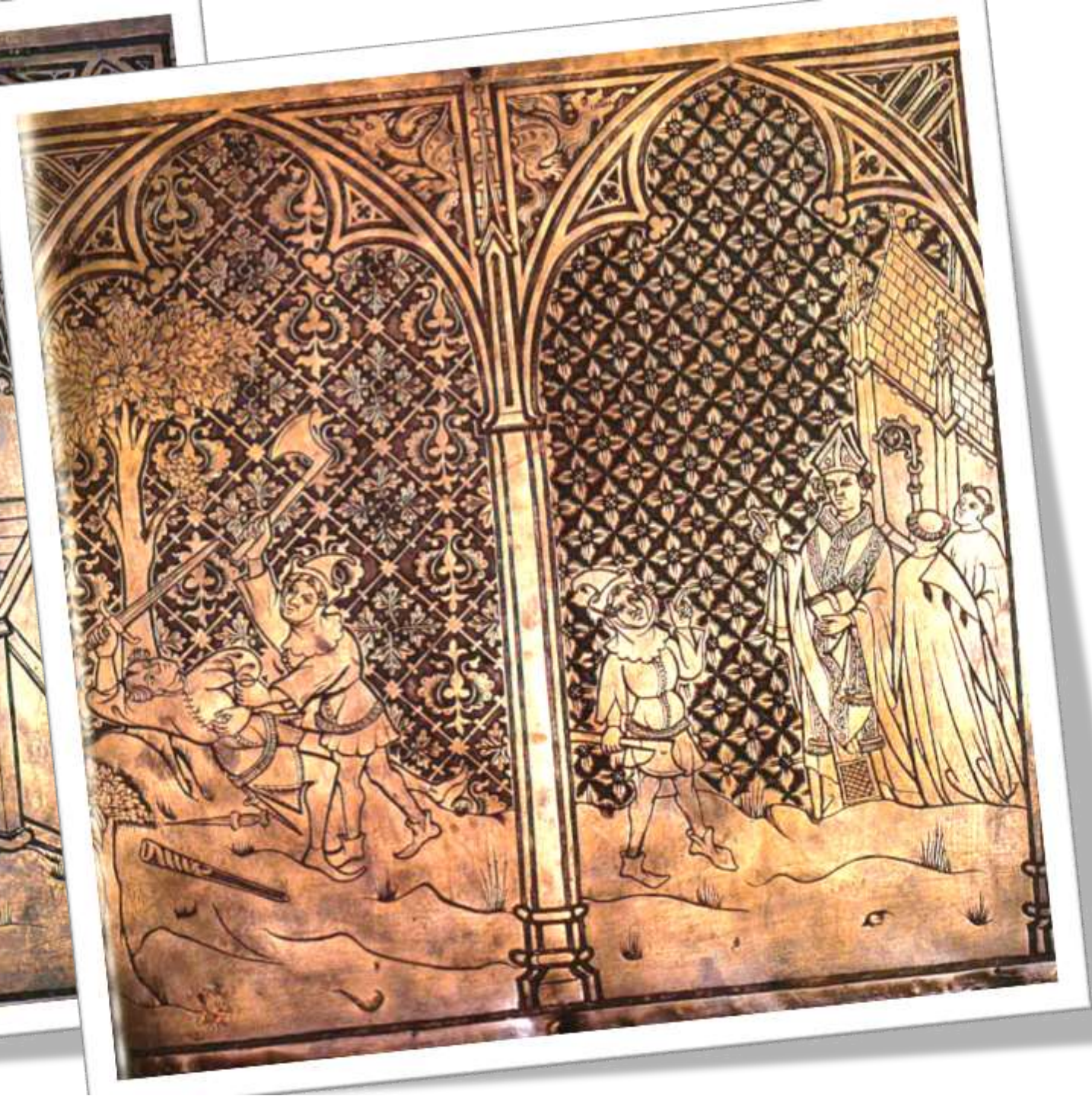


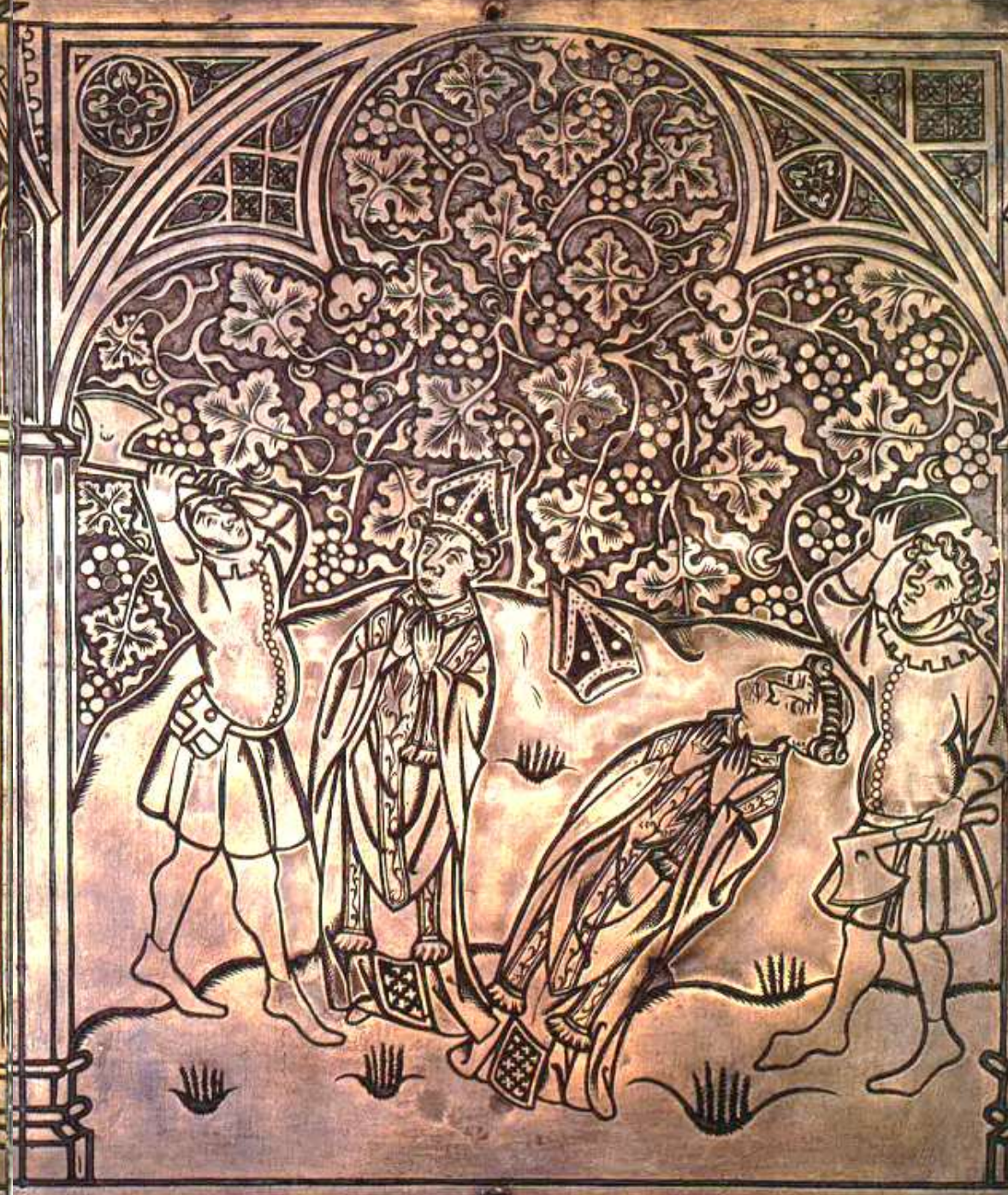
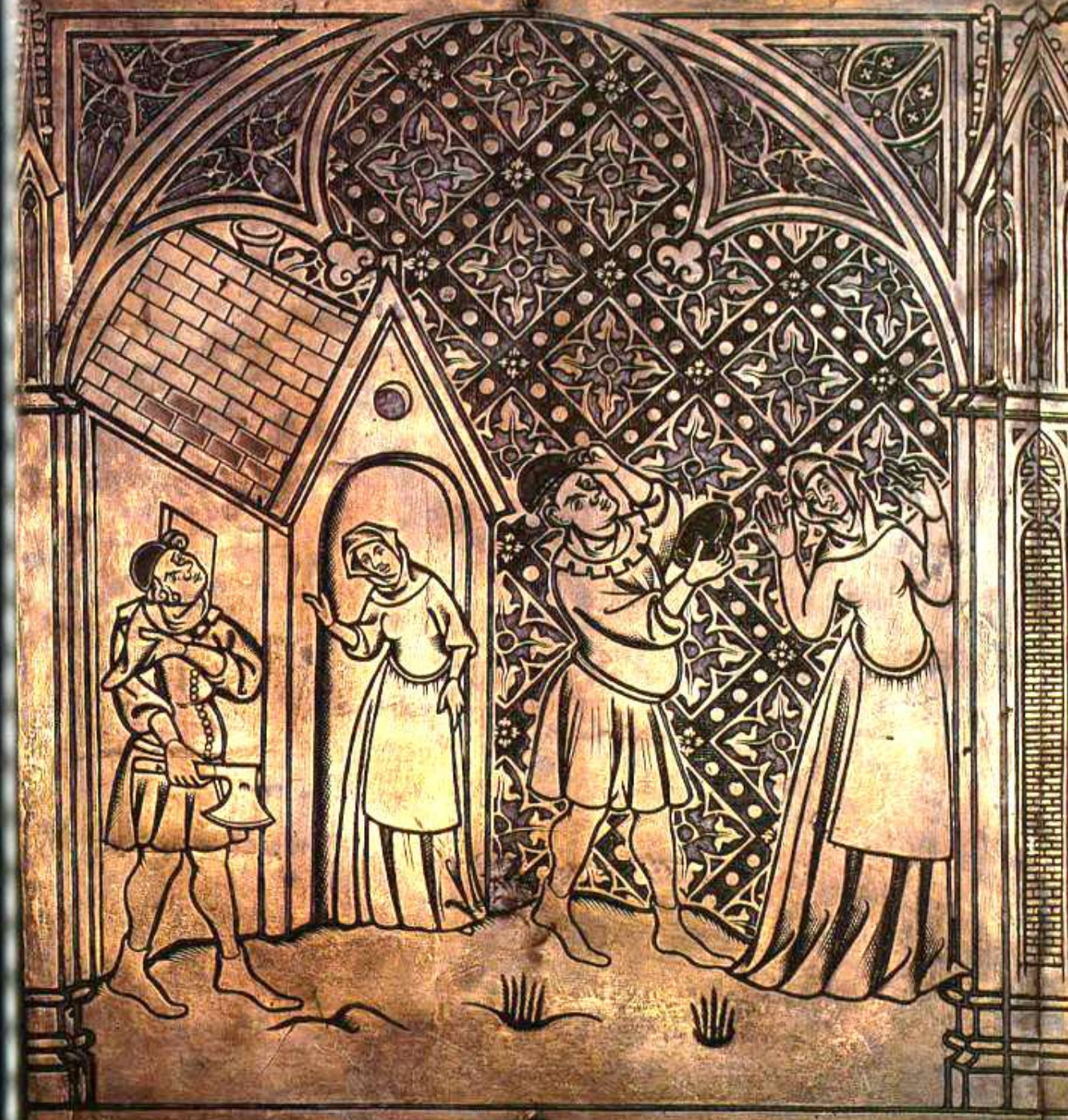
Wolmar Westling, 1871.
Museovirasto, Historian
kuvakokoelma
HK18711016:69







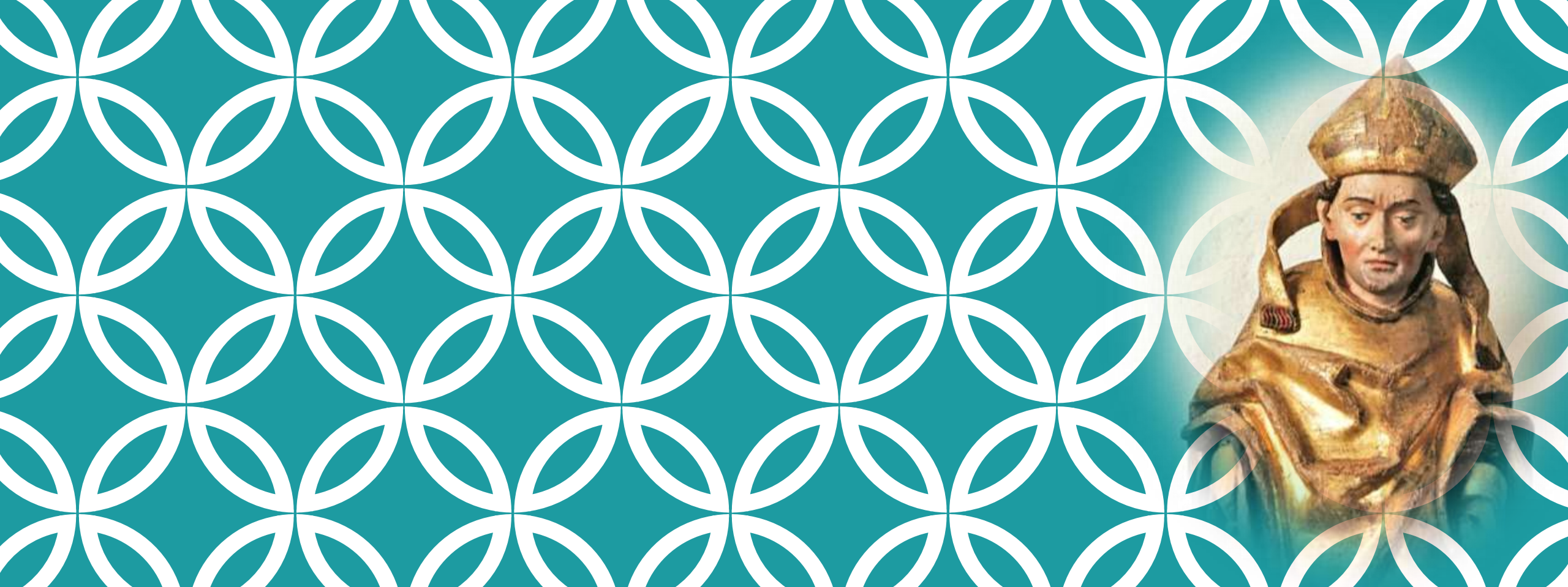












KIITOS!

tuomas.m.heikkila@helsinki.fi